



**MODSTEEL**  
PREFABRICATED MODULAR STEEL STRUCTURES

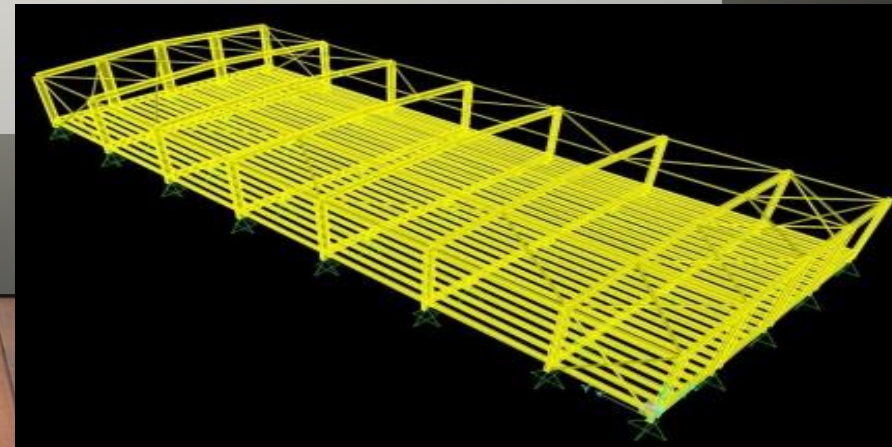
**WAREHOUSES & HANGARS**

# OUR SERVICES

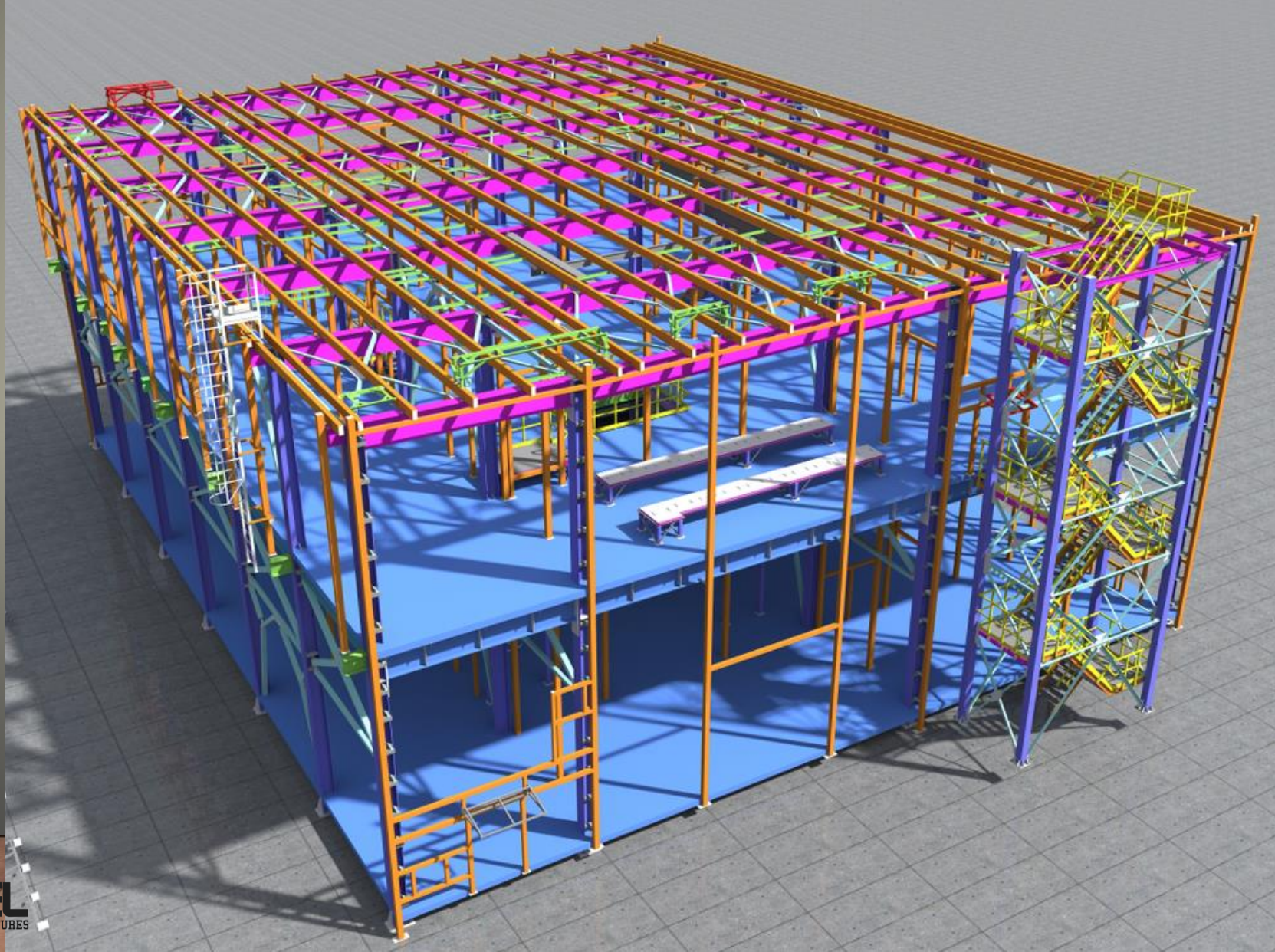
- ▶ Design and manufacturing of **steel warehouses**. We can manufacture heavy steel (from built up sections or ready section profiles) and light steel warehouse structures.
- ▶ Polyurethane and **Rockwool insulated sandwich panel** assembly at Roof and Sides cladding
- ▶ Supervising and managing of steel building projects
- ▶ Roofing systems, seamless metal roofing
- ▶ **Pre-engineered** prefabricated buildings
- ▶ Industrial Buildings
- ▶ **Turnkey** services
- ▶ Trapezoidal steel sheet applications
- ▶ Cold Rooms.

# DESIGN

- ▶ We use latest version of well known design programs; Autocad, Archicad, Sta4cad, SAP2000, XSteel.
- ▶ All connection elements are designed according to DIN norms.
- ▶ Our structures are designed and built to withstand in extreme weather conditions including high humidity; great seasonal and diurnal temperature variations and even earthquakes.
- ▶ We can design and manufacture large clear spans.
- ▶ Our **Pre-engineered** prefabricated building design know-how serve you fast, competitive, smart engineering solutions for your business.
- ▶ MODSTEEL design solutions will save approximately 20% from the total weight of the building.
- ▶ 7/24/365 technical support.



# DESIGN



# CORROSION PROTECTION

- ▶ We can do painting on steel structures with latest technology according to international standards.
- ▶ Sand blasting.
- ▶ Hot dip galvanization.
- ▶ Manufacturing from cold formed galvanized steel.
- ▶ Drilling, cutting and all shaping works done at factory.



# WELDING



- ▶ Certified welding workers.
- ▶ Welding process according to international standards also our company follows ISO standards at quality management
- ▶ Visual Inspection (VT)
- ▶ Radiographic Inspection
- ▶ Magnetic Particle Inspection (MT)
- ▶ Liquid Penetrant Inspection (PT)
- ▶ Ultrasonic Inspection (UT)

# SOME OF OUR PROJECT REFERENCES



# SOME OF OUR PROJECT REFERENCES





# SOME OF OUR PROJECT REFERENCES



# SOME OF OUR PROJECT REFERENCES



# SOME OF OUR PROJECT REFERENCES



# SOME OF OUR PROJECT REFERENCES



# SOME OF OUR PROJECT REFERENCES



# SOME OF OUR PROJECT REFERENCES



# SOME OF OUR PROJECT REFERENCES



# SOME OF OUR PROJECT REFERENCES





# SOME OF OUR PROJECT REFERENCES



# SOME OF OUR PROJECT REFERENCES



# SOME OF OUR PROJECT REFERENCES



# SOME OF OUR PROJECT REFERENCES



# SOME OF OUR PROJECT REFERENCES

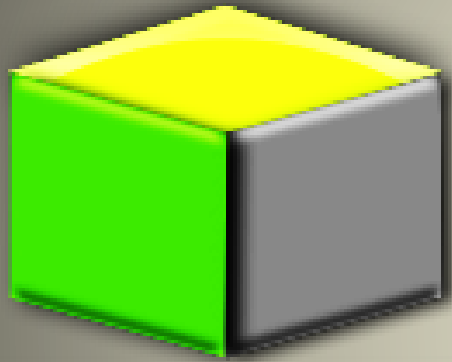


# SOME OF OUR PROJECT REFERENCES



# SOME OF OUR PROJECT REFERENCES





# MODSTEEL

PREFABRICATED MODULAR STEEL STRUCTURES

[www.modsteel.com](http://www.modsteel.com) // +90 212 706 62 25 // [info@modsteel.com](mailto:info@modsteel.com)