



# MODSTEEL

PREFABRICATED MODULAR STEEL STRUCTURES



## MODULAR ACCOMMODATION UNITS CATALOGUE



## MODULE R 01

1 KAMYONLA TAŞINABİLİR  
2 KİŞİLİK KONUT

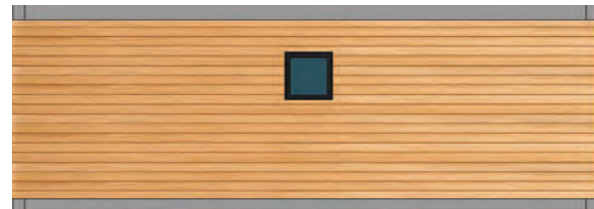
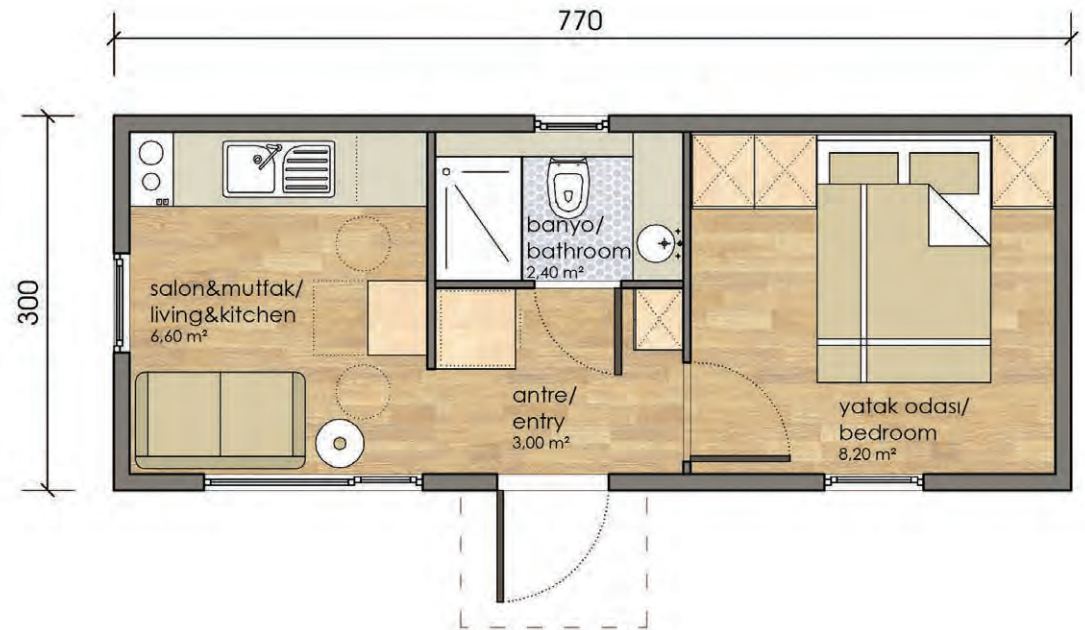
Net Alan : 20,20 m<sup>2</sup>

Brüt Alan : 23,10 m<sup>2</sup>

CAN BE CARRIED WITH 1 LORRY  
2 PERSON HOUSE

Net Area : 20,20 m<sup>2</sup>

Gross Area: 23,10 m<sup>2</sup>





## MODULE R 02

1 TIRLA TAŞINABİLİR  
2 KİŞİLİK KONUT

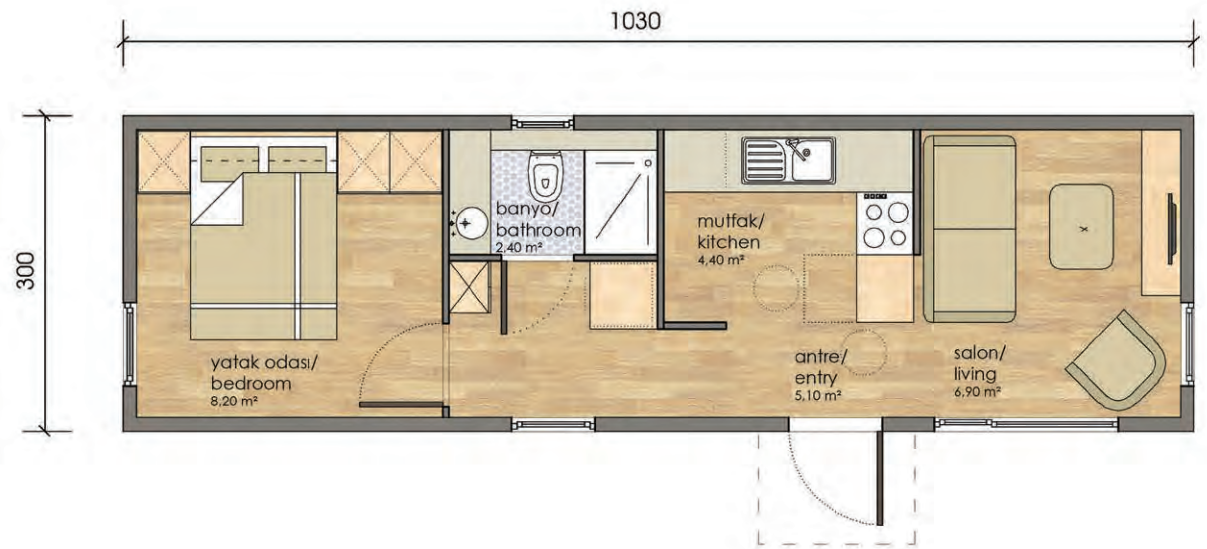
Net Alan : 27,00 m<sup>2</sup>

Brüt Alan : 30,90 m<sup>2</sup>

CAN BE CARRIED WITH 1 TRUCK  
2 PERSON HOUSE

Net Area : 27,00 m<sup>2</sup>

Gross Area: 30,90 m<sup>2</sup>





## MODULE R 03

1 TIRLA TAŞINABİLİR  
2 KİŞİLİK KONUT

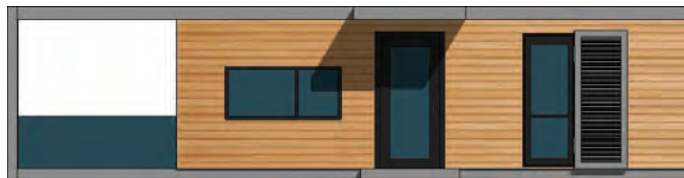
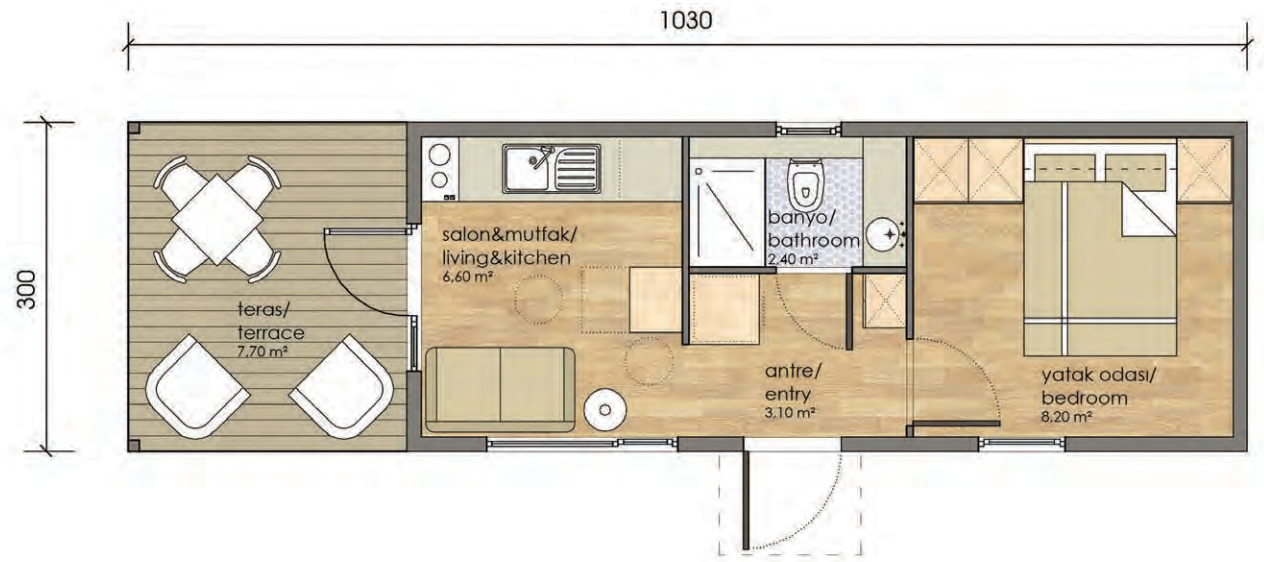
Net Alan : 28,00 m<sup>2</sup>

Brüt Alan : 30,90 m<sup>2</sup>

CAN BE CARRIED WITH 1 TRUCK  
2 PERSON HOUSE

Net Area : 28,00 m<sup>2</sup>

Gross Area: 30,90 m<sup>2</sup>





## MODULE R 04

1 KAMYON ve 1 TIRLA TAŞINABİLİR  
2 KİŞİLİK KONUT

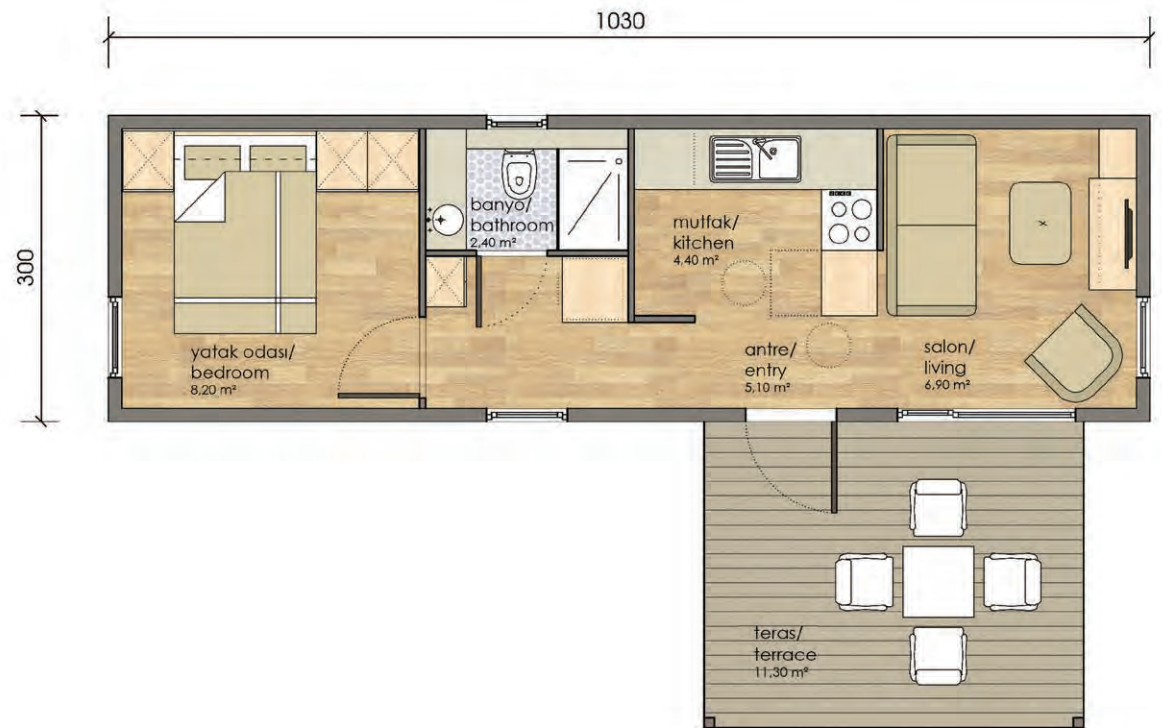
Net Alan : 38,30 m<sup>2</sup>

Brüt Alan : 42,20 m<sup>2</sup>

CAN BE CARRIED WITH 1 LORRY  
AND 1 TRUCK  
2 PERSON HOUSE

Net Area : 38,30 m<sup>2</sup>

Gross Area: 42,20 m<sup>2</sup>





## MODULE R 05

1 KAMYON ve 1 TIRLA TAŞINABİLİR  
3 KİŞİLİK KONUT

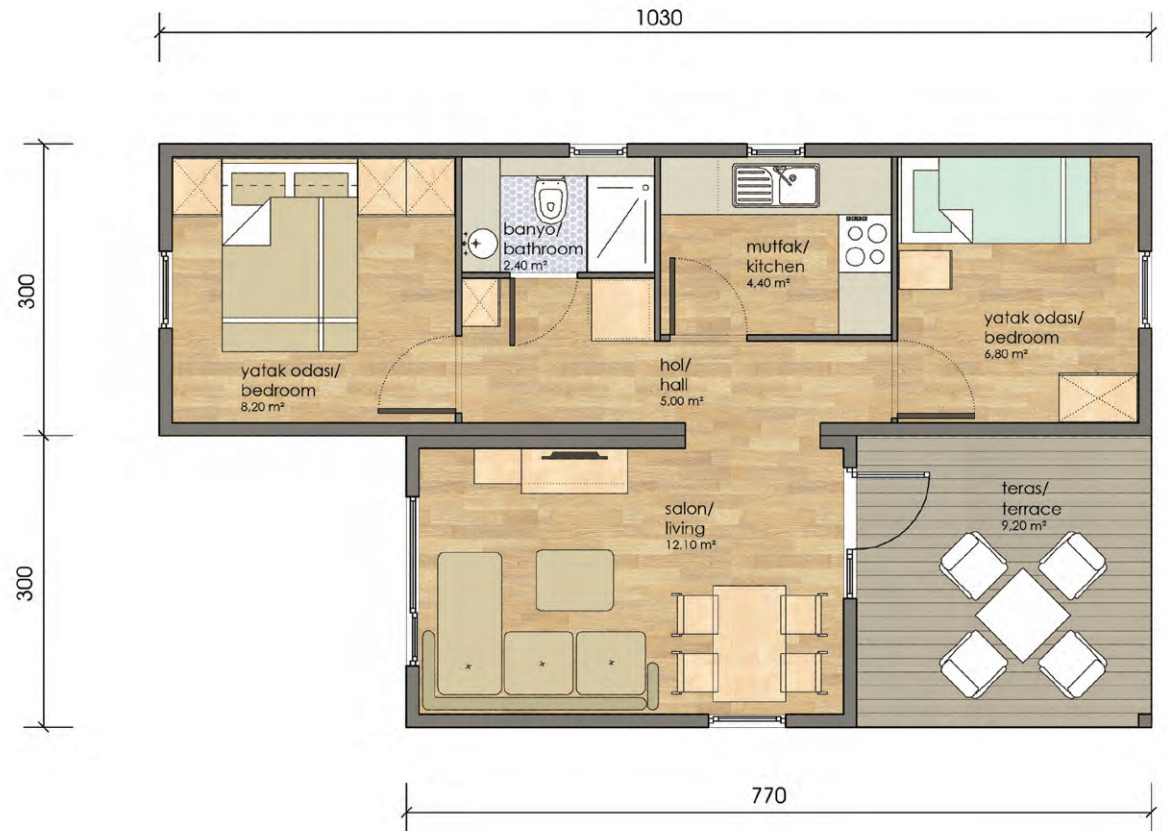
Net Alan : 48,10 m<sup>2</sup>

Brüt Alan : 54,00 m<sup>2</sup>

CAN BE CARRIED WITH 1 LORRY  
AND 1 TRUCK  
3 PERSON HOUSE

Net Area : 48,10 m<sup>2</sup>

Gross Area: 54,00 m<sup>2</sup>





## MODULE R 06

2 TIRLA TAŞINABİLİR  
4 KİŞİLİK KONUT

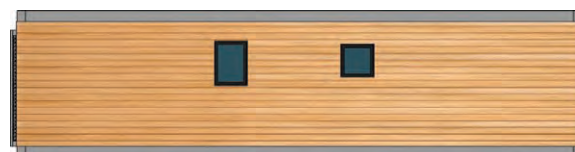
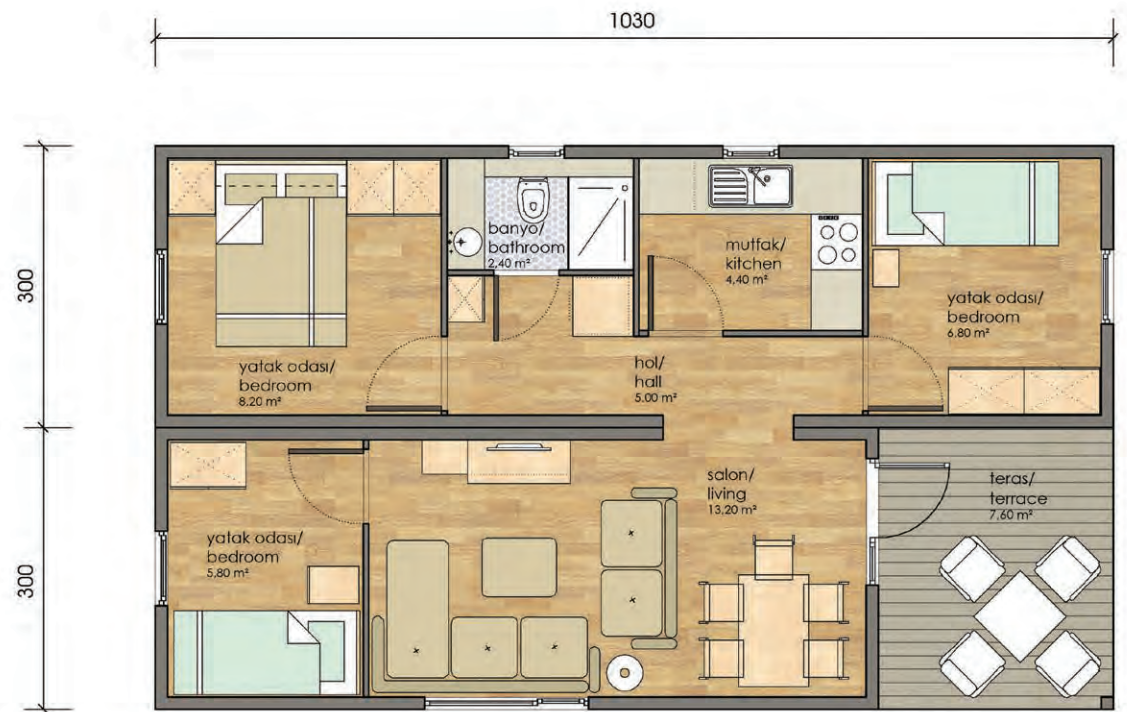
Net Alan : 53,40 m<sup>2</sup>

Brüt Alan : 61,80 m<sup>2</sup>

CAN BE CARRIED WITH 2 TRUCK  
4 PERSON HOUSE

Net Area : 53,40 m<sup>2</sup>

Gross Area: 61,80 m<sup>2</sup>





# MODULE R 07

2 KAMYONLA TAŞINABİLİR  
4 KİŞİLİK KONUT

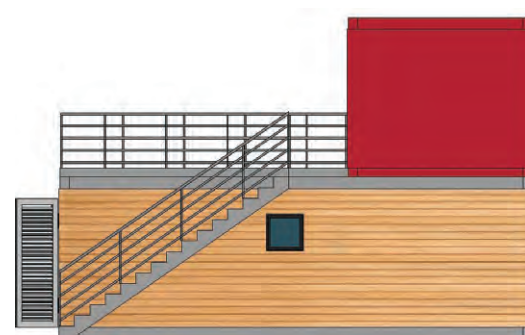
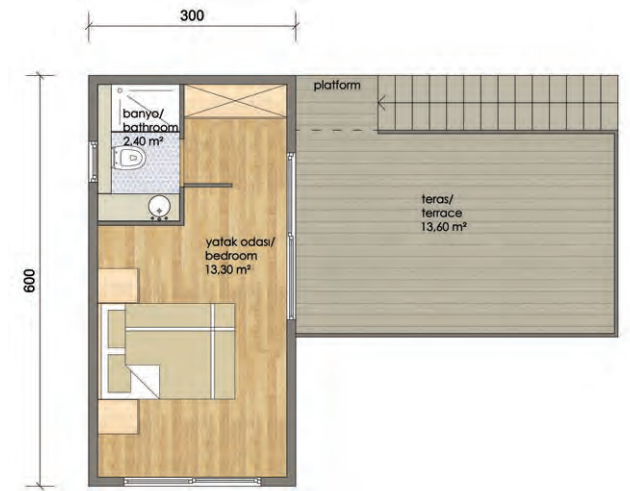
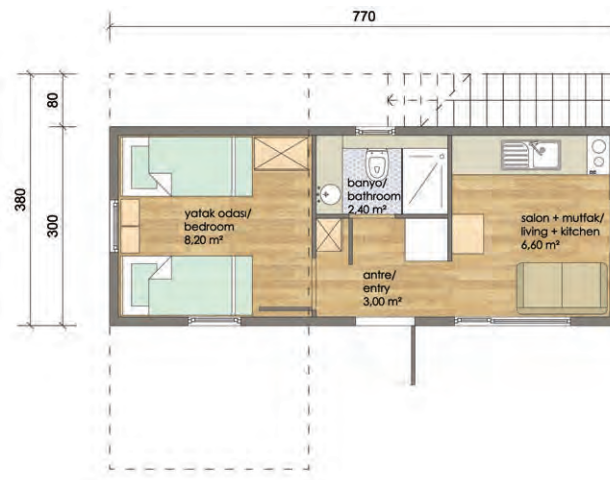
Net Alan : 46,70 m<sup>2</sup>

Brüt Alan : 52,20 m<sup>2</sup>

CAN BE CARRIED WITH 2 LORRY  
4 PERSON HOUSE

Net Area : 46,70 m<sup>2</sup>

Gross Area: 52,20 m<sup>2</sup>







## MODULE R 08

2 TIRLA TAŞINABİLİR  
3 KİŞİLİK KONUT

Net Alan : 56,40 m<sup>2</sup>

Brüt Alan : 61,80 m<sup>2</sup>

CAN BE CARRIED WITH 2 TRUCK  
3 PERSON HOUSE

Net Area : 56,40 m<sup>2</sup>

Gross Area: 61,80 m<sup>2</sup>





## MODULE R 09

1 KAMYON ve 2 TIRLA TAŞINABİLİR  
4 KİŞİLİK KONUT

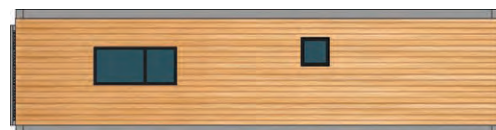
Net Alan : 64,40 m<sup>2</sup>

Brüt Alan : 70,20 m<sup>2</sup>

CAN BE CARRIED WITH 1 LORRY  
AND 2 TRUCK  
4 PERSON HOUSE

Net Area : 64,40 m<sup>2</sup>

Gross Area: 70,20 m<sup>2</sup>





## MODULE R 10

1 KAMYON ve 2 TIRLA TAŞINABİLİR  
5 KİŞİLİK KONUT

Net Alan : 63,20 m<sup>2</sup>

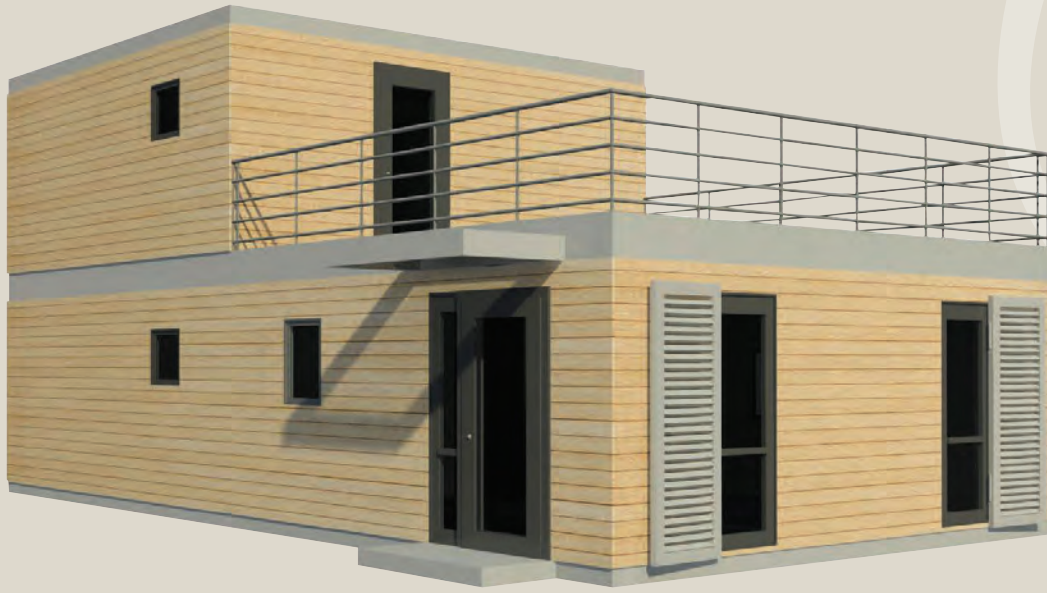
Brüt Alan : 70,20 m<sup>2</sup>

CAN BE CARRIED WITH 1 LORRY  
AND 2 TRUCK  
5 PERSON HOUSE

Net Area : 63,20 m<sup>2</sup>

Gross Area: 70,20 m<sup>2</sup>





# MODULE R 11

**3 TIRLA TAŞINABİLİR  
6 KİŞİLİK KONUT**

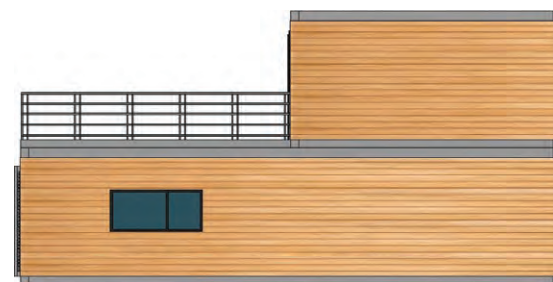
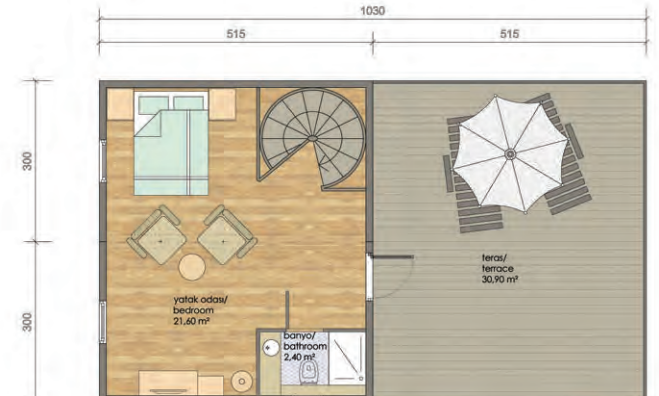
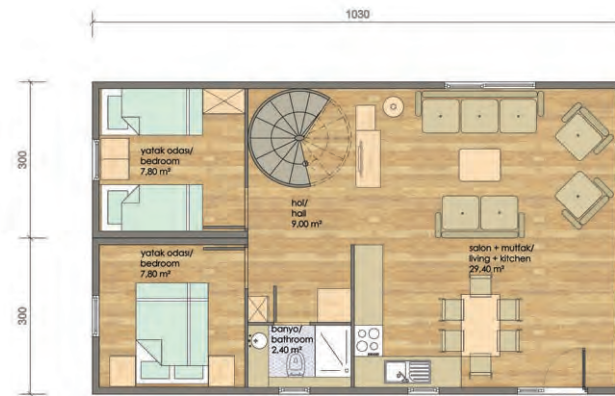
Net Alan : 111,30 m<sup>2</sup>

Brüt Alan : 123,60 m<sup>2</sup>

**CAN BE CARRIED WITH  
3 TRUCK  
6 PERSON HOUSE**

Net Area : 111,30 m<sup>2</sup>

Gross Area: 123,60 m<sup>2</sup>





# MODULE R 12

3 TIRLA TAŞINABİLİR  
5 KİŞİLİK KONUT

Net Alan : 110,50 m<sup>2</sup>

Brüt Alan : 123,60 m<sup>2</sup>

CAN BE CARRIED WITH  
3 TRUCK  
5 PERSON HOUSE

Net Area : 110,50 m<sup>2</sup>

Gross Area: 123,60 m<sup>2</sup>

